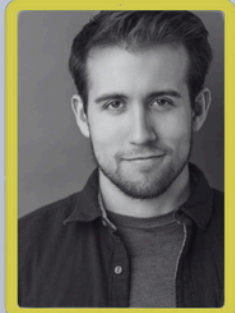


EMANUEL CARRERO

FOREVER Plaid



TERRANCE MCQUEEN



KYLE CHANNELL



CEDRIC J. PAIGE



COOPER MCCONNELL SHAW



PARKER VIATOR

EMANUEL CARRERO (*Jinx*) is honored to be returning to the Mountain Theatre Company stage! He currently acts as the full time Company Manager for Mountain Theatre Company. Favorite credits include *JERSEY BOYS* (Frankie Valli), *HOME FOR THE HOLIDAYS* (Tinsel), *MUSIC IN MOTION* (Man 1), *PIPPIN* (Lewis), *MAMMA MIA* (Ensemble), the national tour of *NICKELODEON'S PAW PATROL LIVE! "RACE TO THE RESCUE"* (Ryder), *THE PRODUCERS* (Ensemble), *PRISCILLA QUEEN OF THE DESERT* (Swing), *UNDER FIRE* Reading with Broadway's Barry Harman & Grant Sturiale (Pedro), *HAIRSPRAY* (IQ), *PIRATES OF PENZANCE* (Samuel), *THE MIKADO* (Yum Yum), *SPRING AWAKENING* (Ernst Reinhold), *LEONARD BERNSTEIN'S NEW YORK* (Boy). Love to Scott, friends, and family. Wepa!!!! Follow him on Instagram: @emanuelcarrero

KYLE CHANNELL (*Francis*) is thrilled to debut with Mountain Theatre Company in *FOREVER PLAID*. Originally from Columbus, Ohio, he has performed throughout the country, most recently appearing as Henry Higgins in *MY FAIR LADY* in Tampa, Florida. Other favorite credits include *JERSEY BOYS* (Bob Gaudio, Suncoast Broadway), *INTO THE WOODS* (The Baker, TheatreLab Dayton), *MYSTIC PIZZA* (Tim Travers, Tent Theatre), *THE MUSIC MAN* (Harold Hill, ICA), *CHILDREN OF EDEN* (Father, Herbst Theatre), *AT HOME AT THE ZOO* (Peter, Jubilee Director's Lab), *ARCADIA* (Septimus Hodge, Festival Playhouse) and serving as Ringmaster for the Venardos Circus. Kyle trained at Wright State University and Interlochen Center for the Arts. Love to Mom and Todd for their unwavering support, Cooper for all the adventures, and KC for being my home. Many thanks to his advocates at Resolute Artists Agency and Rebel Creative Group. Find him on Instagram: @kyle.channell or connect at kylechannell.com.

TERRANCE MCQUEEN (Sparky) is excited to be returning to Mountain Theatre Company. Originally from Tifton, Georgia, he studied Musical Theatre at Valdosta State University. Terrance's career began with the most challenging role in contemporary theatre...Pig #2 in SHREK: THE MUSICAL and has since included performances in HOME FOR THE HOLIDAYS (Ensemble, Mountain Theatre Company), THE ROCKY HORROR SHOW (Dr. Frank N Furter, Roxy Regional), SPONGEBOB: THE MUSICAL (Plankton, Crane River Theatre), ELF: THE MUSICAL (Ensemble, Springer Opera House), LEGALLY BLONDE (Nikos/Warner US, Emerald Coast Theatre Company). Terrance extends sincere gratitude to the Mountain Theatre Company team, the cast and crew of FOREVER PLAID, and his family and loved ones for their continued support! @itsterrancemcqueen.

CEDRIC J. PAIGE (Swing) is humbled to be making his Mountain Theatre Company debut! Previous credits include Ensemble/Booker T. Washington u/s in RAGTIME (Ensemble, Booker T. Washington u/s, City Springs Theatre Company), BEAUTIFUL: THE CAROLE KING MUSICAL (Drifter, City Springs Theatre Company) AFTER MIDNIGHT (Quartet Leader, NCL) VEGAS! THE SHOW (Sammy Davis, Jr., NCL), RUBY (Ensemble, Westcoast Black Theatre Troupe) JOSEPH...DREAMCOAT(Asher, Alhambra Dinner Theatre), SMOKEY JOE'S CAFE (Adrian, PSST), SISTER ACT (Eddie, Circa '21). Proud graduate of Florida State University (BFA) and Northwestern University (MA). All glory to God and thanks to his parents, mentors, friends, and the Mountain Theatre Company family for the opportunity to be apart of this show. Follow him on Instagram: @cedricpaige_

COOPER MCCONNELL SHAW (Smudge) is elated to be making his Mountain Theatre Company Debut in FOREVER PLAID. He originally hails from Virginia and is currently based out of New York City. Select previous credits include JERSEY BOYS (Nick Massi: Suncoast Broadway Dinner Theater, Virginia Musical Theater, Riverside Center), BEAUTIFUL: THE CAROLE KING MUSICAL (Low Righteous Brother, Virginia Musical Theater), ALL SHOOK UP (Ensemble, Flat Rock Playhouse), SOUTH PACIFIC (Ensemble/bass soloist, Flat Rock Playhouse), and MUSIC MAN (Ensemble, Texas Shakespeare Festival). Much love to Lindsay, friends, and family for all their support. IG: @cooper.mcconnell.shaw

PARKER VIATOR (Swing) is grateful to be making this Mountain Theatre Company debut! He recently starred as Buddy in ELF: THE MUSICAL with MGM Resort and Casino. Other credits include CINDERELLA & A CHORUS LINE (Flat Rock Playhouse) and lead vocalist with Sea World Entertainment. Parker also had the unforgettable honor of sharing the stage with Bellamy Young, Christine Baranski, and Debbie Allen at an Anniversary Gala for his alma mater, the University of Mississippi. Special thanks to the Mountain Theatre Company, family, and friends! @parkerviator

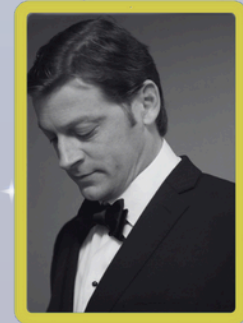
FOREVER Plaid



JACK HOPPER



DAN KNOWLES



MATT MOLESWORTH

JACK HOPPER (Bass) is a freelance upright/electric bassist, with experience playing many genres of music including Classical, Jazz, Rock, Gospel, and Funk. Jack especially enjoys playing Musical Theater, and recently spent 4 months closing out the 2nd National Tour of DEAR EVAN HANSEN. Some of Jack's selected credits include THE WILD PARTY (UNC School of the Arts), RAGTIME (McGregor Hall), and THE LIGHTNING THIEF (UNC Greensboro). This past summer he served as the resident bassist for the Post Playhouse 2024 season in Crawford Nebraska. Jack is thrilled to be working with the Mountain Theatre Co. in his home state of North Carolina!

DAN KNOWLES (Drums) has been a patron of the Mountain Theatre Company for years, and is thrilled to be playing drums in his first show with MTC. As a 26 year member of the US Army and US Air Force Bands, Dan has performed all over the country in rock, country, jazz and ceremonial bands. In 2008, he deployed to the Persian Gulf in support of US troops. Dan has performed with such artists as Lee Greenwood, Maynard Ferguson, Chick Corea, and can be seen in the 2002 smash hit SWEET HOME ALABAMA, with Reese Witherspoon. His recordings with the jazz group Applescraps can be found on Apple Music. He recently performed the show THE WIZ (R.O.M.E. Productions) and is a featured drummer and soloist with the Clock Tower Jazz Ensemble, Rome, GA. Looking forward to "almost" being in a show with my youngest daughter, Erin!

MATT MOLESWORTH (Piano) is excited to perform with Mountain Theatre Company for the first time since he and his wife moved to Highlands in the fall of 2023. He finished a production of MATILDA (Pianist, Orchestra Director, Co-Music Director) with the Highlands PAC Educational Theatre in May, after 2024's performance of OLIVER (Pianist). Matt has had a 30-year career as a pianist and music director in the Raleigh, NC area, and now plays and teaches in and around the Highlands/Cashiers plateau. He has played as a soloist and in various ensembles for Highlands town events and is also a member of the jazz piano trio, "Standard Elevation Trio," who perform both public and private events in the area.